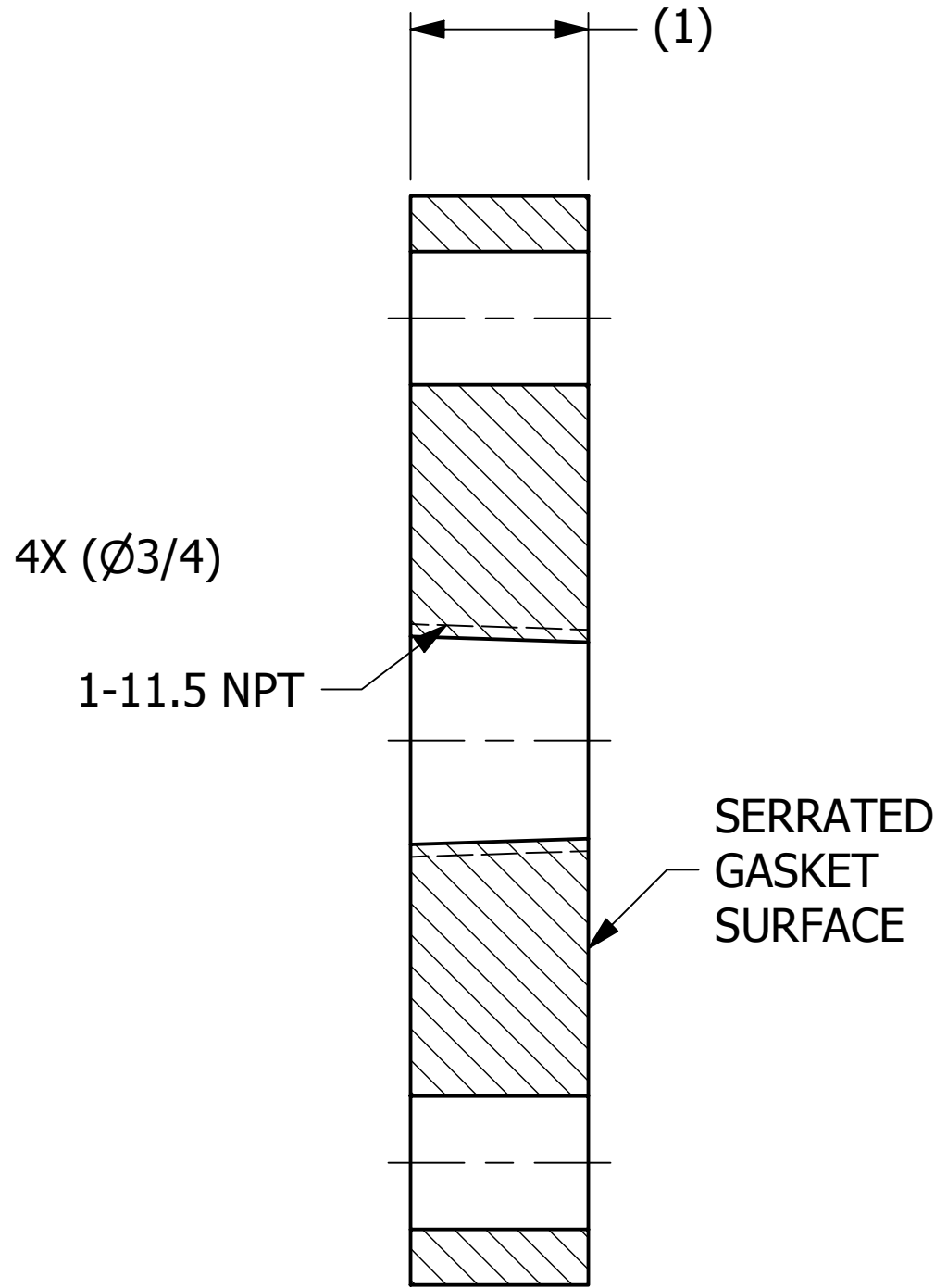
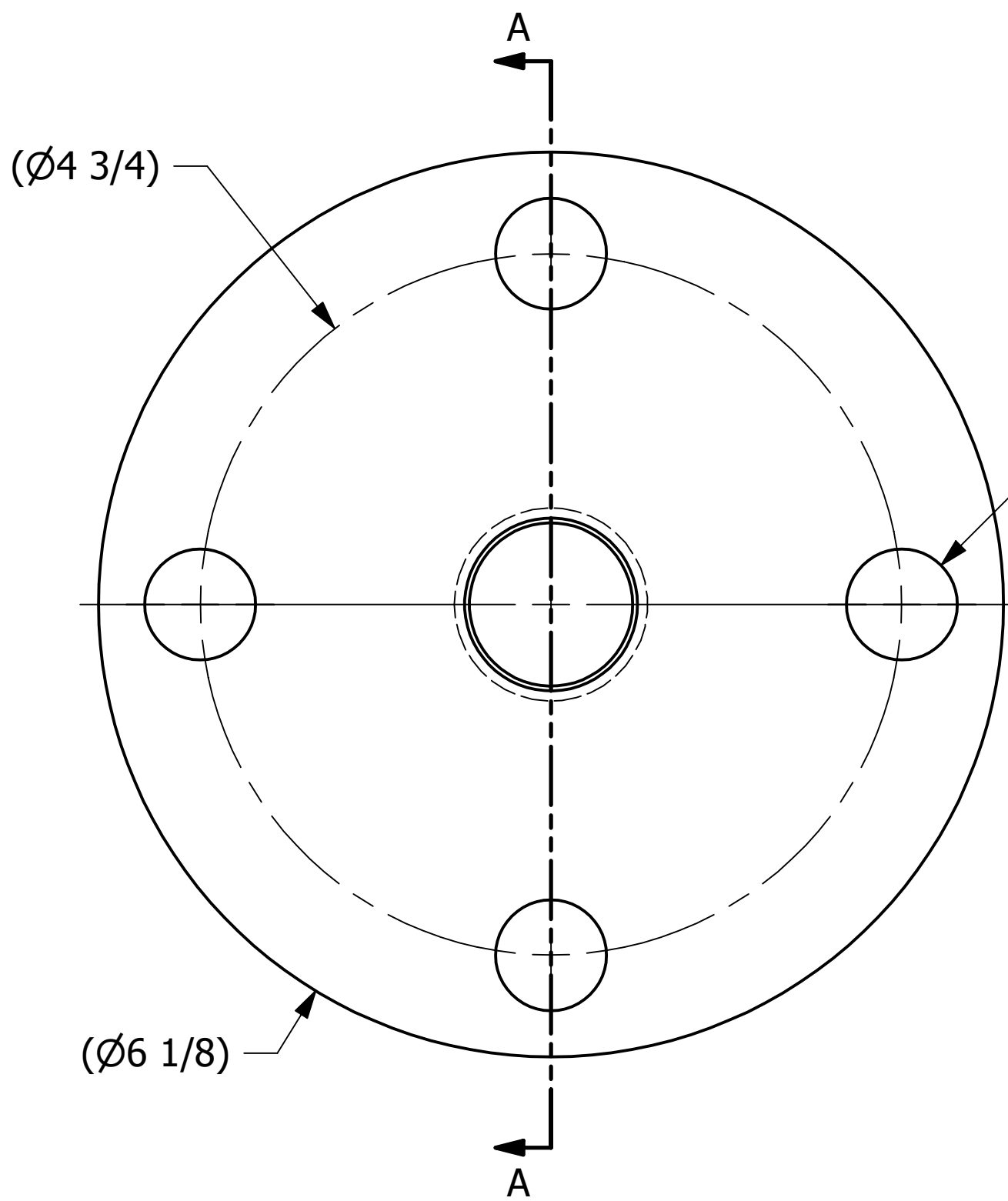
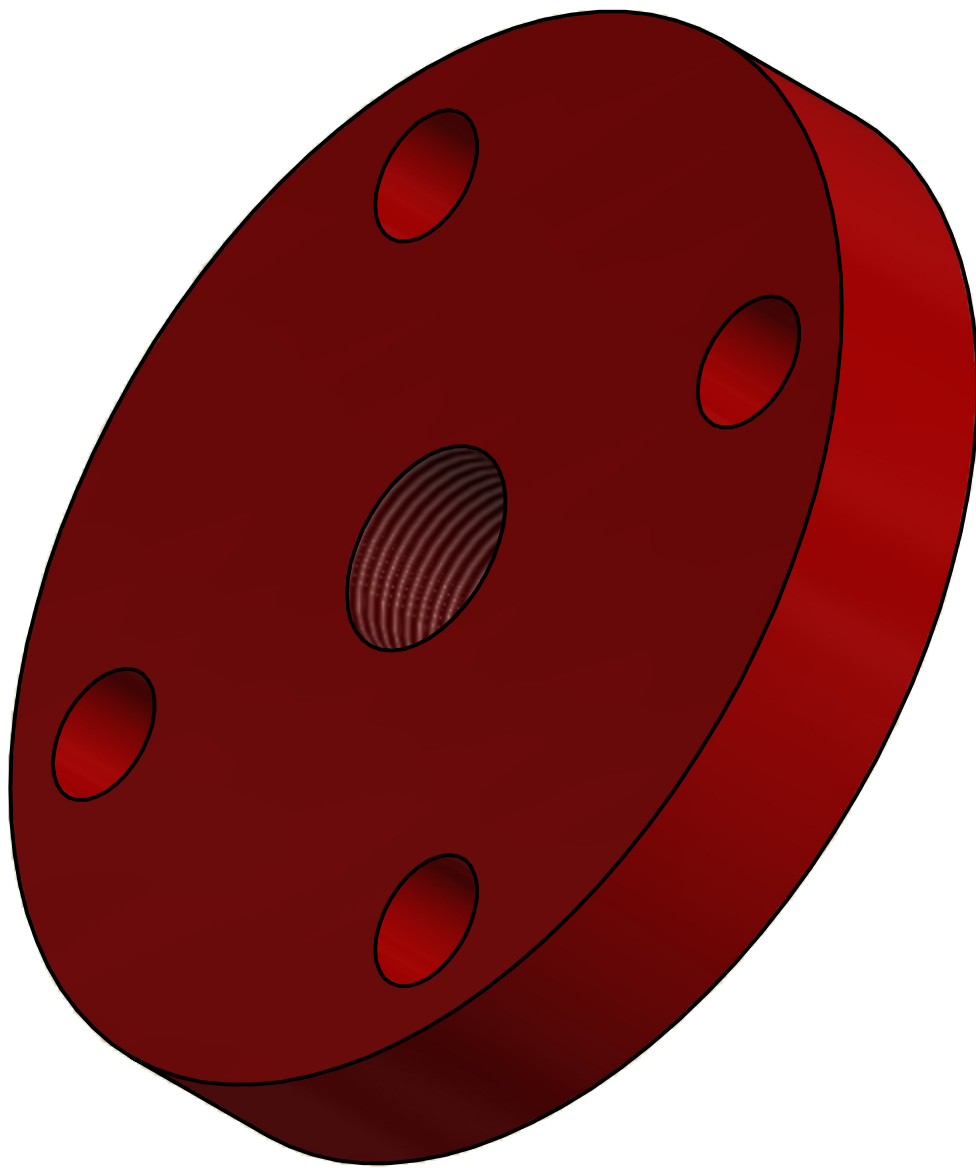


SALES DRAWING SALES DRAWING

SALES DRAWING SALES DRAWING

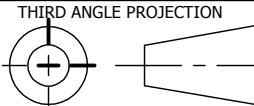


SECTION A-A



ISOMETRIC VIEW

UNLESS OTHERWISE SPECIFIED
DIMENSIONAL TOLERANCES
FRACTIONAL: $\pm 1/16$
X.XX: $\pm .03$
X.XXX: $\pm .015$
ANGLE: $\pm 1^\circ$
DEBURR ALL SHARP EDGES.
ALL MACHINED SURFACES TO
HAVE A 125 RMS FINISH UNLESS
NOTED OTHERWISE.



DRAWN BY:	BRG
CHECKED BY:	PJG
PROTOTYPE BY:	BRG
PROTOTYPE DATE:	6/3/2009
APPROVED FOR PRODUCTION BY:	PJG
PRODUCTION DATE:	9/21/2009

B	TAK	6-20-12	CHANGED OD FROM 6" & 1" NPT THROUGH HOLE
A	CHL	9-21-09	NEW PART ADDED TO SYSTEM
REV	BY	DATE	DESCRIPTION
PART NAME: AIR INLET FLANGE 2"X1" 150 LB			
MATERIAL: SALCO PE			
PROJECT #: 081105		SHEET #: 1 OF 1	SCALE: 1:1
DRAWING #: C26994		PART #: HS21AIFP	